

SPRING/SUMMER COLLECTION • 2022

Prestige

SCOTLAND



RETTIE

STYLISH LIVING ACROSS SCOTLAND



THE DATEJUST

The ultimate Rolex classic, the Datejust was the first self-winding waterproof chronometer wristwatch to display the date in a window, and continues to be the quintessential watch, reflecting the essence of timeless style.

#Perpetual

LAINGS

SINCE 1846

GLASGOW | EDINBURGH
SOUTHAMPTON | CARDIFF

lainguk.com



OYSTER PERPETUAL DATEJUST 41




jeffreysinteriors

INTERIOR DESIGN STUDIO & RETAIL EXPERIENCE

8 North West Circus Place Edinburgh EH3 6ST

0131 247 8010 @jeffreysinteriorsd www.jeffreys-interiors.co.uk



A WARM

WELCOME

To Prestige Scotland, a property lifestyle magazine celebrating luxury living.

Within each edition, we will shine the spotlight on all things stylish in Scotland, bringing you the very best in property, culture, fashion, motoring and much more.

Since the end of June 2021, the housing market in Glasgow's West End has been astounding. The pent-up demand as a result of three months locked down was expected, however, the sheer volume of interest we had experienced in this industry was extraordinary.

In the 36 years of selling property in this hugely diverse area, we are witnessing remarkable premiums being paid, with more demand for desirable houses than there is supply in the market, it is a great time to sell for what can be an unexpectedly good price.

Local knowledge and experience are of great importance to sellers, it is key to look to an estate agent who is immersed in the area and is regularly in contact with a wide variety of buyers.

Rettie & Co. have a significant database of contacts, and with demand being so high we will often have numerous potential buyers before our properties even reach the open market. Some sellers will opt to sell "off market" and with our extensive contacts we can achieve a competitive closing date in a private and confidential way.

Technology is ever changing our market, throughout lockdown it was important for us to ensure that we were constantly adapting and becoming increasingly creative with new ideas such as the "virtual tours", which allowed buyers to gain a great deal of information before making a decision to view. Embracing new technology and improving customer service has served us well and enabled us to thrive.

Sellers look for a personal and professional package and as a result of being privately owned and fully invested in the partnership, Rettie & Co. are entirely focused on providing a service that will result in achieving the best return for our clients.

Maitland Walker
Managing Partner,
Rettie West End LLP

The showcase "Prestige Scotland" magazine will next be published in October. To include your business or for editorial enquiries kindly contact Steven Hall direct on 01803 752184 or steven@tbcpublishing.co.uk

Front cover image: Stone bridge in Old Course, St. Andrews, Scotland. Prestige Scotland is published by TBC Publishing Limited, Telephone: 01763 810042. ©TBC Publishing 2022. All rights reserved. Reproduction is forbidden except by express permission of the Publishers. The content of this magazine is believed to be correct but its accuracy is not guaranteed and it does not form part of any offer or contract. TBC Publishing Limited cannot accept responsibility for any omissions or errors.

BOSCOLO BATHROOMS



CONTENTS

SPRING/SUMMER COLLECTION 2022

CONTENTS

08

Property Matters

A selection of stunning properties for sale via Rettie & Co.

14

The Audacity of Excellence

"A classic designed for a lady" The Rolex Oyster Perpetual Lady-Datejust.

36

Passion for Excellence

Chopard, family-run watchmaking and jewellery company.

44

Pure Luxury

The elegant New Range Rover defines modern luxury.

60

Luxury Retail

Prioritising the experience of retail following pandemic

73

James Martin's Butter

Butter is the essential book for anyone who loves to cook.

87

Serenely Elegant

Mikimoto and its pearls; A pioneering jewellery company.

97

An Education in Diamonds

Appreciation for diamonds was unavoidable for Richard Laing.

105

Time for Change

The Tank watch is Cartier elegance embodied.

112

Watchmaking Artistry

Patek Philippe, perfect for the modern woman.

118

Journey of a Fabergé Egg

Mystery and intrigue has surrounded the legendary Fabergé.

122

Office Directory

With a network of 17 offices, we've got you covered.



4 5 3

Offers Over £1,900,000

maria.ponte@rettie.co.uk

Maria Ponte | 0131 624 9085

OSWALD ROAD EDINBURGH

With outstanding views across to Blackford Hill, this is a rare opportunity to acquire a magnificent, detached property of huge architectural significance situated on an extensive corner site in the Grange Conservation Area, one of the city's most desirable residential addresses. Spread over four levels with six bedrooms, the Category A-listed house was designed in a 17th century Scottish architectural style by the eminent Scottish architect John Kinross. EPC E





CATER MILLEY, TEMPLEHALL
LONGFORGAN

Cater Milley is an outstanding modern country house, situated in a most enviable position on the banks of the River Tay estuary, with dramatic views across to Fife, with ever changing light. Cater Milley is believed to have once been the site of a Roman fort. The house has been cleverly designed to make the most of its position and the building's linear shape suggests the appearance of a wave breaking over a wall. EPC C

3 3 4

Offers Over £1,450,000

alastair.houlden@rettie.co.uk

Alastair Houlden | 07818 060837



Thomas Robinson | Architects

Designing the future, preserving the past.
Architects of exceptional contemporary and
traditional houses across Scotland.

www.thomasrobinsonarchitects.co.uk
Glasgow 01360 661144
mail@thomasrobinsonarchitects.co.uk





2 5 2

Offers Over £1,275,000

john.wybar@rettie.co.uk

John Wybar | 0131 322 2661

GAMEKEEPER'S ROAD
EDINBURGH

'Amulree', 50 Gamekeeper's Road is a fine, handsome 1930s period villa offering generous and versatile family accommodation of 2330 sq.ft over two floors, as well as being in walk in condition. Accommodation is spacious with great proportions and flows well. With private driveway, detached garage as well as a beautifully designed, mature and secure landscaped garden to both the front and rear of the property, it makes a wonderful family home. EPC D



Mozolowski & Murray

Conservatories | Orangeries | Sun Lounges | Garden Rooms



To find out more call us on

0345 050 5440

Visit our design centre
or request a brochure.

Mozolowski & Murray

Design Centre
57 Comiston Road Edinburgh EH10 6AG
Open 6 days, Monday to Saturday 10am to 4pm
with Saturday by appointment.

www.mozmurray.co.uk



THE AUDACITY OF EXCELLENCE

"A classic designed for a lady". So might some describe the Rolex Oyster Perpetual Lady-Datejust.



Maybe they're right. If "classic" means perpetuating tradition with a blend of elegance and precision, grace and resistance, beauty and technical performance. If being "a lady" means constantly pursuing a higher standard with unyielding determination. Then indeed the Lady-Datejust is a classic designed for a lady.

1957. The Birth of an Icon

Audrey Hepburn was captivating Hollywood, Sylvia Earle obtained her Master of Science, Françoise Sagan was shaking up the literary landscape, Pat Smythe reigned supreme in equestrian sport, and fashion designer Adèle Simpson had New-York clamouring for her latest creations. Women were changing.

No less ladylike than their mothers, they were enjoying new, active lifestyles. Hans Wilsdorf, the founder of Rolex, understood this: the modern woman wanted to manage her time to control her destiny. She needed as much precision as men.

"The modern woman wanted to manage her time to control her destiny. She needed as much precision as men."

Hans Wilsdorf, the founder of Rolex

Left: M279138RBR-0015 £29,900

Above: M279174-0013 £6,400



And so was born, in 1957, Rolex's classic women's watch: the Lady-Datejust. A watch of smaller proportions built on unwavering standards of excellence. A watch for women that was every bit as reliable as a man's. With this innovation, the brand had broken new technical ground in terms of the case size, while also obtaining COSC chronometric certification for this small model.

The Lady-Datejust was inspired by audacity. It addressed not only a technical challenge but a cultural one, too: this watch would serve to further women's independence. An uncompromising creation, combining elegance and accuracy on the wrist of a modern, graceful and accomplished woman. A symbol of assertiveness expressed in exquisitely feminine form.

Incorporating several decades of watchmaking innovations, the Lady-Datejust has established itself as the ultimate classic women's watch: a piece of technical prowess made for women who believe in themselves.

Multiple dial variations are possible on the Lady-Datejust. They are available in a wealth of materials, colours, motifs and markers – indices, Roman or Arab numerals – with numerous gem-setting options for the hour markers or the dial itself. Among the iconic champagne-colour, silver, white, pink and diamond-set dials, the dial in mother-of-pearl stands out for its singularity. Domed, fluted or gem-set, the bezel of the Lady-Datejust is available in three different designs, each conferring its own distinctive aesthetic.

Left: M279381RBR-0012 £13,800

Above: 1957 Lady Datejust

Laings Edinburgh
72 George Street, Edinburgh EH2 3BX

Laings Glasgow Flagship Showroom
46-50 Argyll Arcade, Glasgow G2 8BG

www.laingsuk.com



Offers Over £675,000

anne.sutherland@rettie.co.uk

Anne Sutherland | 07825 164 086

LANCASTER CRESCENT, KELVINSIDE GLASGOW

A spectacular three-bedroom, double fronted, lower conversion over two levels, forming part of an elegant blonde sandstone terraced townhouse which is "B" listed and was designed by James Cowan circa 1898. It is currently owned by AndyScott, the internationally known sculptor famous for creating The Kelpies. Andy and his wife Hanneke loved living in this wonderful home. EPC E



UNDERSTATED ELEGANCE

Bryce and his team have worked on bespoke interiors for clients across the UK and Europe in a variety of town and country houses.

Each room is a reflection of both the client's tastes and of Bryce's inimitable style. A well researched yet original approach to every project results in spaces that are always truly individual. Attention to detail and understated elegance is apparent in every interior produced.

When planning the design for a home Bryce always takes great care to define the client's needs both aesthetically and practically. Everyone's home is a personal expression of who they are, so he spends a long time talking with new clients. It's important to know exactly where you're going with the entire project before embarking on any single part of it, that way decisions that may dictate the wrong path can be avoided. Breadth of vision over a project is key.

Bryce's design style is recognised as strong in the layering of patterns, colours, and textures producing subtle rhythms to draw the eye around a room. Balance is maintained between traditional and contemporary, masculine and feminine, geometry and freeform, textures, tones and shades.

www.brycemckenzie.co.uk



Images are computer generated for illustrative purposes



 1  3-4  3-4

Prices from £295,000

newhomes@rettie.co.uk

Craig Gillespie | 0131 243 3858

ALMONDVALE GARDENS BLACKBURN, WEST LoTHIAN

Almondvale Gardens is an exciting new development of 3 and 4 bedroom homes set within commutable distance of Edinburgh and Glasgow. Each home offers luxurious finishes and open plan living that's perfect for entertaining and day-to-day life. West Lothian is well positioned for family life in Scotland's Central Belt. With a rich local history and fantastic amenities, these beautiful homes offer the best of city and country living in a well-connected area.



Stonecraft

**We design
beautiful living
spaces**

Luxury quartz worksurfaces & fires

We specialise in high quality marble, granite and quartz surfaces for kitchens, bathrooms, floors and bars.

Contact

www.stonecraftedinburgh.co.uk

info@stonecraftedinburgh.co.uk





Images are computer generated for illustrative purposes



1 1-5 1-4

Prices from **£445,000**

craighouse@rettie.co.uk

Claire Birrell | 0131 624 4080

CRAIGHOUSE
MORNINGSIDE, EDINBURGH

At Craighouse you'll discover a beguiling mix of living spaces set in historic grounds that rise majestically over Edinburgh. From conversion apartments to family-friendly townhouses, opt for the myriad benefits on offer here: a close-knit community with Morningside and Bruntsfield on the doorstep; 52 surrounding acres of breath-taking parkland delivering a countryside feel in the heart of the city; top tier schools in the locale; and a high-end property to call home.





CLIVE CHRISTIAN
FURNITURE Co.

Bringing exceptionally
inspired opulence to
the world's most
outstanding homes.

Scotland Showroom & Design Consultancy

97-99 Great Western Road, Glasgow, G4 9AH, Scotland
+44 (0)141 332 8989

scotland@clivechristianfurniture.com
www.clivechristianfurniture.com



5 3 4

Offers Over £1,700,000

andrew.smith@rettie.co.uk

Andrew Smith | 07702 317 276

THE GREEN, ST ANDREW'S COURT MAIN STREET

The Green, St Andrew's Court is one of only two houses developed by the award winning Playfair Properties in 2015/16 which the current owners have extended and upgraded over the last 7 years to create the fabulous home that can be seen today. The house is designed for modern living and was built using high quality materials including high efficiency low E glazing with rolled zinc roofing and cladding. EPC C





IN CONVERSATION

WITH TURCAN CONNELL

We talk to Paul Forrester Smith and Niall Stringer at Turcan Connell.

During the early stages of the pandemic the Scottish Government brought in a raft of protective measures in relation to residential tenancies. These included extended notice periods and removing the mandatory grounds for recovery of possession which had previously been available to landlords. In addition, a pre-action protocol was introduced which requires landlords to send letters to tenants with rent arrears before Tribunal proceedings can be raised. It was anticipated that the law would revert to its pre pandemic state at the end of March 2022. That now seems unlikely. All landlords and prospective landlords should be aware of the reasons why and the potential consequences of the proposed changes in the legislation.

The Government's stated intention is to extend the emergency legislation until September 2022. The Government have committed to allow to expire provisions

which are no longer necessary, and this includes the extended notice provisions presently in force for residential tenancies. Please note that all grounds for recovery will remain discretionary. However, it is not all good news for landlords as there is a new Bill currently before the Scottish Parliament - the "Coronavirus (Recovery and Reform) (Scotland) Bill".

At the time of writing, the Bill is at Stage 1 of the Parliamentary process. The period for public comments ended on 25th February 2022. While the Bill covers a wide range of topics, the focus in this article is on the proposed changes to tenancy legislation.

The Bill proposes that there will no longer be any mandatory grounds for recovery of a let property. Before the 2020 Act, landlords were certain to be able to recover vacant

possession of their property in certain circumstances. For example, at the end of a short assured tenancy (SAT) or where there were more than 3 months rent arrears, and for a Private Residential Tenancy (PRT) if the landlord wished to sell, live in the property, or where there were arrears for more than 3 consecutive months.

However, if the Bill is passed as introduced to Parliament all these mandatory grounds will disappear. Where a landlord wishes to recover vacant possession of a let residential property and the tenant does not leave voluntarily following service of the required notices, proceedings will be necessary in the First Tier Tribunal (Housing and Property Chamber). The test that the Tribunal will need to address for SATs is that it is "reasonable to make an order for possession", and for PRTs that it is "reasonable to issue an eviction order on account of those facts". In rent arrears cases, the Bill provides that the Tribunal must consider the extent to which the pre-action protocols have been complied with by the landlord.

It appears that these changes will apply to all existing SATs. If so, clear and unambiguous legislation which afforded tenants security of tenure for agreed periods of time while giving landlords comfort that they could recover the property at the end of the tenancy (or at least within a few months of the end date), will be replaced by legislation which all but gives security of tenure to the tenant.

Although each case will turn on its own facts and circumstances, our general experience of the Tribunal has been that it is a tenant friendly forum. It also takes a number of months to obtain an order even in the most straightforward circumstances. Any failure by the landlord in terms of the tenancy documentation is likely to be picked up by the Tribunal even if the tenant does not.

While changes may be introduced to the Bill, it seems certain that there will be significant permanent changes made to the law governing SATs and PRTs which will make it more difficult to obtain vacant possession. Indications are that at least some of the existing protections for tenants will remain in place. Against that, we understand that, even though all grounds for recovery are discretionary, less than 2% of eviction applications in the last year have been refused on the test of reasonableness. Perhaps most landlords, despite rumours to the contrary, are reasonable, only seeking to take the most extreme action available to them when there is no other recourse.

The right to have a safe home is a basic and undeniable right. The right to a tenant to have some form of security essential. Security of tenure in an urban residential environment is perhaps not the biggest concern a landlord will have. It may be of more concern for landlords with rural residential property. The introduction of the SAT saw an enormous rise in residential letting: coincidence or reflective of legislation which tried to balance the needs of tenants and landlords. While the proposed legislation is representative of a government which does not support private landlords or investors in property to rent, there is an

irony and tension in legislation that, if it is seen as being so skewed for the benefit of one side, ends up causing the very asset which is helping address the housing crisis being lost to the rental market as private landlords sell up. Is it really too much to have a contract which would ensure that in certain defined circumstances, a landlord could recover their property, such as on a sale. Not every purchaser will wish to buy a property with a sitting tenant and how do you value a property which you might never get back (and could be subject to rent controls...). Of course, irony would be redefined if a right to buy for tenants was also introduced.

There will always be a rental market, security of tenure might not be the issue we think but some certainty for landlords on the right to recover their property does not seem a big ask. Meantime, the need to ensure that you have vetted the tenant and have satisfied yourself on all the appropriate references becomes even more crucial.



Top: Paul Forrester Smith, Senior Associate
Above: Niall Stringer, Partner at Turcan Connell

TURCAN CONNELL

Edinburgh
Princes Exchange, 1 Earl Grey Street, Edinburgh, EH3 9EE
+44 (0)131 228 8111

Glasgow
180 St Vincent Street, Glasgow, G2 5SG
+44 (0)141 441 2111

www.turcanconnell.com



THE ART OF KITCHEN

Aberdeen Showroom

Denmore Road
Bridge of Don, AB23 8JW
01224 824 300

Broxburn Showroom

11 Youngs Rd, East
Mains Industrial Estate
Broxburn, EH52 5LY
01506 862 780

Edinburgh Showroom

117 Dundas Street
New Town, EH3 5EF
0131 523 0477

Edinburgh Showroom

Sterling Home, 4 Whitehill Rd
Fort Kinnaird, EH15 3HR
0131 337 3434

Glasgow Showroom

220 Great Western Road
G4 9EJ
0141 404 7744

Tillicoultry Showroom

76 Moss Road
Tillicoultry, FK13 6NS
01259 237 010

www.kitchensinternational.co.uk



Images are computer generated for illustrative purposes



1 1-3 1-2

Prices from **£380,000**

waverleysquare@rettie.co.uk

Craig Gillespie | 0131 202 7024

WAVERLEY SQUARE
EDINBURGH CITY CENTRE

Set four minutes from Waverley train station, the attractive apartments, penthouses and mews homes at Waverley Square are surrounded by the rich history and contemporary architecture of a neighbourhood described as 'The Covent Garden of Edinburgh'. The perks of this fabulous Old Town location are matched by the sophisticated and high-spec interiors on offer. Ready to move in from Spring 2022 and available now for private viewing appointments.





**GREAT WESTERN ROAD, KELVINSIDE
GLASGOW**

This is a well presented and comfortably proportioned three-bedroom upper duplex apartment contained within an attractive blonde sandstone building. The internal layout extends to four adaptable principle apartments including a fabulous bay windowed lounge/dining room, a master bedroom, a second bedroom and a versatile third bedroom which is currently utilised as a study/home office. In addition, there is a fitted dining kitchen with a fantastic outlook onto Bingham's Pond. EPC C



Offers Over £415,000

anne.sutherland@rettie.co.uk

Anne Sutherland | 07825 164 086



FARMORE INTERIORS

ST ANDREWS Est. 1997

INTERIOR DESIGN • RENOVATION • PROJECT MANAGEMENT
SOFT FURNISHINGS • CARPETS • FINE FURNITURE
HOME ACCESSORIES • LIGHTING



175 & 199 SOUTH STREET, ST ANDREWS KY16 9EE
01334 478291

info@farmorethaninteriors.com
www.farmorethaninteriors.com



PASSION FOR EXCELLENCE

Founded in 1860, Chopard is one of the only remaining family-run watchmaking and jewellery companies owned by the Scheufele family.

Passion for excellence, craftsmanship, ensured by the work of the passionate Artisans who are experts in their respective fields, and innovation lie and the core of the Maison's values and are expressed through all its collections. Today, over 50 skills are mastered in house, including some of the rarest and most complex, always ensuring the highest standard of quality.



Through its contemporary creations, the Maison celebrates a positive vision of life and testifies a continued creative fearlessness, combined with perfected watchmaking expertise and jewellery-making acquired over successive generations. Chopard believes genuine luxury can only be achieved if combined with ethics, environmental and social responsibility. Since 2018, the Maison uses 100% ethical gold in the production of all its watch and jewellery creations.

Movement is of fundamental importance in Chopard's creative approach, a symbol of innovation in the field of watchmaking, and freedom in that of its jewellery. The iconic dancing diamonds featured in most of the Maison's collections appear to float weightlessly as they dance and twirl between two sapphire crystals, making one forget the passing of time. Performing free variations and dances as if they will do so forever, spinning according to the movements of the woman who wears them. These mesmerising dancing diamonds are set in a domed cylinder cuilet, invented by the Chopard workshops in the 1970s, allowing the gems to improvise the most extravagant movements without scratching the glass. An extensive amount of precision and skill are required to assemble the dancing diamonds within each creation, these skills allow them to be perfectly water resistant as the exact right amount of



uniform pressure is applied to the entire glass. Additionally, they guarantee that the diamonds are able to enjoy the right amount of space in which they can move playfully but yet always remain parallel to the dial, removing any risk of turning over and revealing their undersides.

Chopard's creativity is uniquely manifested in each of its collections. Launched in 1993, the Happy Sport model is the first watch to combine diamonds with a stainless-steel case and today, it remains one of the most iconic models and desirable in the industry. An authentic sense of Joie de Vivre is expressed by the Happy Diamonds creations, which are as audacious as they are playful with a truly free spirit. Generosity and caring for others are of central importance to Chopard and these values are emphasised in the Happy Hearts collection, perfectly combining the Maison's talisman heart and emblematic moving diamonds. Each collection features an array of models, available in many different variations and forms, perfect for everyday wear or a more elegant evening attire.

Laings Edinburgh
72 George Street, Edinburgh EH2 3BX
www.laingsuk.com

bulthaup takes care of the details so that
you can enjoy a harmonious environment.



We design the environment for your moments.
Visit us in Glasgow and Edinburgh.
Our team is looking forward to speaking with you.

Cameron Interiors Ltd.
458 - 462 Crow Road, Glasgow, G11 7DR, Tel. 0141 334 9532
31 Dundas Street, Edinburgh, EH3 6QQ, Tel. 0131 556 2233
cameroninteriors.bulthaup.com

bulthaup
by cameron interiors



Images are computer generated for illustrative purposes



 1  1-3  1-3

Prices from **£350,000**

neweidyn@rettie.co.uk

Claire Birrell | 0131 322 2660

NEW EIDYN EDINBURGH CITY CENTRE

New Eidyn offers 152 beautifully designed apartments sitting aloft St James Quarter. Located high above the elegant Georgian New Town, enjoy remarkable city living with some of the best views in Edinburgh. With unparalleled amenities and interiors finished with the finest materials, the apartments range in size from studio to three bedrooms and include access to the private residents' Garden Room and sky gardens, a concierge and 24-hour security.





 2  5  3

Offers Over £995,000

brodie.ballantine@rettie.co.uk

Bordie Ballantine | 0131 624 4082



BUCKINGHAM TERRACE EDINBURGH

Elegant five-bedroom duplex apartment occupying the ground and garden levels of an original B listed Victorian townhouse, well positioned on a highly sought-after street in the heart of Edinburgh's West End, with a large south-facing garden to the rear and steps leading to a rarely available private garage also accessed on Belgrave Crescent Lane. The property retains many key original features within its spacious, well-proportioned rooms. EPC C



LANDED

Knowing the law is one thing. Knowing the countryside is another. We are equally at home in both and we know from our years of experience that our straight-talking advice lands well with our estate-owning clients. If you want advisors who understand your world, we are here.

turcanconnell.com

TURCAN CONNELL

Turcan Connell is a Partnership of Scottish Solicitors regulated by the Law Society of Scotland

PURE LUXURY

The elegant New Range Rover defines modern luxury, providing more refinement, customer choice and scope for personalisation than ever before.

“The New Range Rover is a superb manifestation of our vision to create the world’s most desirable luxury vehicles, for the most discerning of customers.”

Thierry Bolloré, Chief Executive Officer, Jaguar Land Rover



Range Rover is the original luxury SUV and has led by example for 50 years, combining serene comfort and composure with all-conquering capability. The New Range Rover is the most desirable yet, mixing breathtaking modernity and aesthetic grace with technological sophistication and seamless connectivity

With a suite of efficient mild-hybrid and plug-in hybrid powertrains – and a pure-electric Range Rover set to join the line-up in 2024 – plus a choice of four, five or seven-seat interiors available across Standard and Long Wheelbase body designs, the New Range Rover is at home in any environment.

Thierry Bolloré, Chief Executive Officer, Jaguar Land Rover, said: “The New Range Rover is a superb manifestation of our vision to create the world’s most desirable luxury vehicles, for the most discerning of customers. It writes the next chapter in the unique story of pioneering innovation that has been a Range Rover hallmark for more than 50 years.”

Land Rover’s new flexible Modular Longitudinal Architecture,

MLA-Flex, underpins every aspect of this luxury SUV, from its unmatched capability and agile handling to its peerless refinement. By combining state-of-the-art engineering techniques with new levels of virtual development and Land Rover’s punishing development programme, the New Range Rover will deliver new levels of quality.

A pair of innovative Extended Range plug-in hybrid electric vehicle (PHEV) powertrains provide CO₂ emissions below 30g/km, with a pure-electric driving range of up to 100km (62 miles),¹ delivering an expected real-world range of up to 80km (50 miles) – enough for typical Range Rover customers to complete up to 75 per

cent of trips using electric power only⁷.

The new luxury SUV is available in SE, HSE and Autobiography models. A First Edition will be available throughout the first year of production, based on the Autobiography and featuring a unique specification. It is exclusively available in a Sunset Gold Satin finish, among a choice of five exterior colours. Both Standard (SWB) or Long Wheelbase (LWB) body designs are available with five seats, while the New Range Rover LWB model is available with a third row for extended comfort for up to seven adults.

The new Range Rover SV5 is an exquisite interpretation of Range Rover luxury and personalisation from the experts at Special Vehicle Operations.

The SV model is available in both SWB and LWB body designs, with exclusive features including new SV Serenity and SV Intrepid design themes and a four-seat SV Signature Suite configuration.

Peerless Refinement

The New Range Rover makes every journey an occasion to be remembered, combining advanced technology with modern luxury to deliver peerless refinement for every occupant, including those in the new third-row seats. By eliminating unwanted noises, vibrations and distractions – and reducing the cognitive load on the driver and passengers – occupants will arrive at their destination feeling refreshed, even after the longest journeys.



Breath Taking Modernity

The fifth-generation luxury SUV takes Land Rover's modernist design philosophy to the next level, with a contemporary interpretation of its trademark profile to create an incredible design statement. It continues to lead, bringing breathtaking modernity, aesthetic grace and sophistication to Land Rover's latest flagship.

Prof Gerry McGovern OBE, Chief Creative Officer, Jaguar Land Rover, said: "The New Range Rover is a vehicle with a peerless character, from the impeccable restraint of its exterior to the flawless tranquil sanctuary of its cabin. Informed by creative intellect and a desire for perfection, it doesn't follow fashion or trend, but by a modernist design philosophy, combined with over 50 years of evolution, it is quite simply the most desirable Range Rover ever created."

The New Range Rover is defined by three lines that can trace their origins back through the generations; the falling roofline, strong waistline and rising sill line. These trademark features combine with a characteristically short front overhang and a distinctive new boat tail rear – complete with practical split tailgate – to create an elegant profile that conveys Range Rover's peerless presence.

The unbroken waistline showcases Land Rover's attention to detail as the rounded edge of the door meets the glass in a simple, clean finish thanks to a specially engineered hidden waist finisher. The design-enabling technology combines with flush glazing, hidden-until-lit lighting and precise detailing to create the impression that the vehicle has been milled from solid.

The sophisticated surfaces provide a clean and contemporary appearance – and contribute to a drag coefficient of 0.30, making this the most aerodynamically efficient luxury SUV in the world

The luxurious interior is underpinned by modern, intuitive and relevant technologies, designed to work harmoniously with the finest materials and wellbeing innovations to create a calm sanctuary for all occupants – turning every trip into an experience to savour.

The exterior colour palette elevates New Range Rover's elegant proportions and clean surfaces while the interior options are more sustainable, responsible and progressive than ever. Customers have a wider choice of materials and finishes, including innovative textiles and tactile Ultrafabrics™ with a continuation of Land Rover's pioneering relationship with Kvadrat™ – Europe's leading manufacturer of premium textiles. It is combined with Ultrafabrics™ to create a defining materiality option that is lighter and generates only a quarter of the CO2 of traditional leather.



Seamless Technology

The New Range Rover maintains its rich bloodline of pioneering innovation with a suite of technologies designed to effortlessly enhance convenience, efficiency, refinement and safety. Land Rover's latest Electrical Vehicle Architecture (EVA 2.0) is the enabler-in-chief and includes Software-Over-The-Air (SOTA) updates for more than 70 electronic modules, meaning the New Range Rover will constantly evolve, improve and remain up to date as it matures.

The New Range Rover revolutionises the in-car experience with seamlessly integrated Amazon Alexa2. Using intuitive natural voice commands goes one step beyond touchscreen or button interfaces in helping reduce cognitive load, providing a sense of effortless modern luxury. In this way, Alexa capabilities allow customers to manage everything from favourite infotainment features and music track selection to navigation or phone contacts – all while keeping their hands on the wheel, and eyes on the road.

Alexa voice AI is embedded within the New Range Rover, so users experience seamless interactivity and next-level convenience. Alexa capabilities also allow customers to check the news, weather and for any scheduled meetings using simple voice commands. The system can even turn on your lights at home and connect to other Alexa-enabled devices.

Alexa works in addition to Wireless Apple CarPlay® and Wireless Android Auto™ and can be initiated either by saying "Alexa" or pressing the Alexa button on the central touchscreen9. It does not need any phone or external device to operate – only details of a customer's Amazon account and an internet connection – while wireless charging for Qi compatible smartphones keeps devices topped up.

New Quality Benchmark

The New Range Rover has been designed, developed and engineered in the UK and, during this process, Land Rover has filed no fewer than 125 patents covering everything from its pioneering chassis technologies to its PHEV battery. Land Rover's engineers used motorsport-derived simulation technology to put the vehicle through its paces in the virtual world more comprehensively and intensively than ever, completing more than 140,000 hours of computational analysis prior to physical testing.

A fleet of prototypes then embarked on a punishing global test and development programme, taking in extreme temperatures ranging from the 45C heat of the desert to the -30C cold of the Arctic.

The New Range Rover will be produced exclusively at the Solihull Manufacturing Facility in the UK, using a state-of-the-art production line housed in the building used to produce early Series Land Rovers. The historic building is the spiritual home of Land Rover and its reimagining as a new, ultra-modern centre for Range Rover production showcases the way the company protects its heritage.

Park's Land Rover Ayr

Land Rover Ayr, 100 Heathfield Road,
Ayr, Ayrshire KA8 9BN

Park's Land Rover Inverness

Land Rover Inverness, 61 Harbour Road,
Inverness IV1 1UF

www.landrover.co.uk



Discover a winter filled with luxury

Book your luxurious midweek Archerfield Pavilion Suite stay on selected dates this November or December and enjoy your dinner on us, from just £265!

Winter is truly a magical time of the year to stay with us on the Archerfield Estate. Enjoy overnight accommodation in our luxury Pavilion Suites for two with a stunning two-course meal on us, created by our Executive Chef.

After a wonderful night's sleep join us for a delicious breakfast in our Clubhouse Restaurant.

Archerfieldhouse.com | +44 (0) 1620 897050 | res@archerfieldhouse.com





Images are computer generated for illustrative purposes



1 1-2 1-2

Prices from **£495,000**

melvillecrescent@rettie.co.uk

Craig Gillespie | 0131 202 0055



MELVILLE CRESCENT

EDINBURGH WEST END

A heritage building designed for modern living; Melville Crescent offers high spec Georgian townhouse conversion apartments in Edinburgh's West End. A sympathetic and design-led conversion with interiors carefully styled for a contemporary palate, a sense of grandeur is cemented by palatial proportions and charming original features. Set on a Georgian streetscape in Edinburgh's desirable West End, Melville Crescent is within easy walking distance of the city's high-end shopping, dining and leisure offerings.



george buchanan architects

www.georgebuchananarchitects.com



@gbarchitectsltd



@gbarchitectsltd

0141 946 2433



Looking after the beating heart
of your home for over 37 years.

Visit Our Design Centre

10 West Netherton St,
Kilmarnock, Ayrshire, KA1 4BT

+44 (0)1563 530 838 | sales@jsgeddes.com

Exclusive Partners

poggen
pohl

GAGGENAU Miele

www.jsgeddes.com



Designed with you in mind,
re-defining your lifestyle.

Luxury

We offer detail-driven design, flawless craftsmanship & innovative technology, we set the standard for high-end kitchen solutions in the UK.

Creativity

Our designs are inspirational, offering their own unique atmosphere and lifestyle. We create truly extraordinary kitchens.

Excellence

Focusing firmly on our clients' wishes, we carefully manage each step of the process to deliver outstanding results.

Our Creative Team will discuss your ideas and desires for your new kitchen, guiding you through the concept and design phase. We will also be delighted to work with you on the full interior décor of your room to ensure that the finished project not only looks stunning, but is ergonomically correct and surpasses all your expectations.

Book an appointment for our design centre or visit
jsgeddes.com





**GLENAFTON HOUSE, PENICUIK ROAD
ROSLIN**

Glenafton House is a very attractive former manse which was originally built circa 200 years ago, the current owners bought the house in 2006 from the Church of Scotland and it has been lovingly restored from top to bottom over the past 15 years in order to provide comfortable modern accommodation over two floors, with the potential scope to further develop the attic floor (subject to planning consents).

3 4 3

Offers Over £950,000

phoebe.bolton@rettie.co.uk

Phoebe Bolton | 0131 624 4066



**We make sure
everything's
addressed.**

As one of Scotland's leading law firms, we have more than 30 years' experience of helping people buy and sell their homes.

We have a highly qualified team of specialists and problem solvers who are equipped to guide you through every stage of the process, **looking after your interests** and keeping you informed every step of the way.

Our professionals can also provide the **very best legal advice** for every aspect of your family's lives, both personal and business related. This full range of services includes Will writing, tax planning, family law, protecting your assets and all aspects of land and estates.



Karen Lang
Partner
karen.lang@
harpermacleod.co.uk



David McIndoe
Partner
david.mcindoe@
harpermacleod.co.uk

**Get in
touch**

call us on
0131 247 2500 | 0141 221 8888
or visit
harpermacleod.co.uk
to find out more about what we can do for you.



Images are computer generated for illustrative purposes



1 1-3 1-2

Prices from **£185,000**

thewireworks@rettie.co.uk

Phil Dean | 0131 243 3858

THE WIREWORKS

MUSSELBURGH, EAST LoTHIAN

With a location that puts both the city of Edinburgh and the coast and countryside of East Lothian within easy reach, the apartments at The Wireworks in Musselburgh – known as the 'Honest Town' – offer up-beat and stylish living in a sought-after location. Designed to make the most of its riverside address, the range of contemporary apartments at The Wireworks have been thoughtfully designed as easy to manage and cost-effective to run.





1 2-3 1-3

Prices From £475,000

thebridge@rettie.co.uk

Phil Dean | 0131 603 8352

THE BRIDGE EDINBURGH CITY CENTRE

Located in popular Canonmills, adjacent to the prestigious New Town, The Bridge is a bespoke development of quality apartments and townhouses. Ready-to-move-into, the townhouses flaunt private winter gardens and terraces overlooking the Water of Leith. Each apartment offers open plan living and either a private balcony or floor-to-ceiling feature windows. With easy access to Stockbridge, Broughton and the greenspace of The Royal Botanic Garden and Inverleith Park, the local amenities are top-notch.



ARCHITECTURAL INSPIRATION

Fiona Robinson, co-director of Thomas Robinson Architects, specialists in modern and traditional architecture across Scotland, talks about her inspiration

Q What made you want to be an architect?

When I was little, I spent time at my cousins' house, designed by my architect uncle, Geoffrey Keanie. It was a cool mid-century house, very modern for the time. It had large open spaces and was just so different to any house I had been in before. I loved being there, spinning around on an Arne Jacobsen egg chair, dizzily staring up at the teak ceiling panels, and sliding on the wooden floors, the room lit with sunshine from the huge windows – a rarity at the time.

Experiencing the feel of this open-plan house made me conscious of how space can be sculpted. Also, our family seemed to think that building houses rather than just buying them was the way to go, so I grew up on many building sites and subconsciously became quite knowledgeable about building.

Q What has been your favourite architectural project?

Over the 20-plus years since founding Thomas Robinson Architects, my favourite project is this Country Park House in Strlingshire, pictured. Our clients were a delight to work with and were fully engaged in the process. They love their house and the way it flows and looks. It has many open-plan areas, great views, and also private cosy sections, and fits very snugly into the landscape. It went on to win a design award. What could be more fulfilling than to be part of that process?

Q What's your favourite building?

There are so many but the large-scale and stark design of the Salk Institute, by Louis Kahn, which I have visited, appeals to my clean lined, minimalist preferences. Also the Sydney Opera House, which speaks to my love of bold, clean and daring concepts.

Fiona can be contacted at:
fiona@thomasrobinsonarchitects.co.uk
www.thomasrobinsonarchitects.co.uk



THE UNMATCHED EXPERIENCE OF LUXURY RETAIL

As the high-street regains momentum and builds towards its pre-pandemic state, businesses are prioritising the experience of retail.

Following the boom of e-commerce throughout lockdown – when shopping online was our only option – bricks and mortar brands and retailers are fighting to retrain their audiences to see the thrill of in-store environments again. However, with an appetite for the sensory encounters and on-hand expertise that can't quite be replicated online, the luxury consumer is an anomaly to this shift in behaviour.

Luxury brands often keep their cards close to their chest and this has been a mark of strength for the high-end retail sector to leverage. Despite the digitalisation of the world's most exclusive luxury names, purchasing items online from them can prove difficult, if not possible. Yes, the luxury sector has never been more present on social media channels like TikTok and Instagram, but its founding fathers reserve the right to sell some of their most coveted products only in-store where they can control the experience and make sure their brand is represented authentically.

A Scottish-born retailer that understands this position is Laings. Having stood the test of time for over 180 years and across three centuries, Laings knows a thing or two about how to create an unforgettable in-store experience. Today, Laings attracts industry newcomers and devoted



enthusiasts alike with its collections of fine jewellery and timepieces from brands such as Rolex, Patek Philippe and OMEGA, presented at four locations across the United Kingdom – Glasgow, Edinburgh, Southampton and Cardiff.

Housed within Glasgow's historic Argyll Arcade and standing in a prime location on Edinburgh's George Street, Laings' Scottish showrooms are the ideal place to experience the theatre of retail first-hand. Some of Laings' most exclusive brands can only be purchased at its showrooms, which also host exhibition collections throughout the year to see the latest in luxury horology and jewellery. Among these collections over the past year to land in-store have included jewellery showcases from Mikimoto, the originator of the world's first cultured pearl, and Chopard, the historic Genevan Maison famed for its connection to the James Bond franchise and Hollywood's elite.

But it isn't the brands that make the experience at Laings so rich, it is the people. Laings has been handed down through six generations of family ownership, with each generation bringing with it a different approach to making the Laings experience tick. Through these years of interactions, Laings

has learned the value of warmth, expertise and understanding of the emotion that is often enveloped in each jewellery and timepiece purchase.

While quietly confident in its already established in-store experience, Laings is looking to its next chapter with the introduction of immersive workshops this year. The company is looking to take its experiential offering to the next level by drawing back the curtain on its artisan jewellery designers, goldsmiths and watchmakers, to showcase the talent behind the services provided to its clients. No longer will these disciplines be shrouded in mystery, with clients invited to seminars and evening events to learn more about the people, crafts and stories behind the illustrious industry.

Discover the Laings experience by visiting its showrooms in Glasgow and Edinburgh or online at:

Laings Edinburgh
72 George Street, Edinburgh EH2 3BX

Laings Glasgow Flagship Showroom
46-50 Argyll Arcade, Glasgow G2 8BG

www.laingsuk.com

Taylor's

Auctioneers | Valuers | Secure Storage

Scotland's Busiest Saleroom.

With 5 specialist sales happening every month that include Jewellery, Porcelain, Furniture, Whisky, Paintings, Books, Fishing ephemera, Militaria etc.

Our valuers travel throughout Scotland on a weekly basis attending properties from Brora to Berwick and beyond. We also conduct written valuations for inheritance Tax, insolvency, insurance purposes, etc for a variety of Law Firms, Insurance Brokers, Chartered Accountants, etc



- Top left | Ardbeg 32 Year Old Single Cask Whisky Distilled 1974 - Sold For £2,200
- Top Middle | Pair of Van Cleef & Arpels Frivole Earrings - Sold For £8,000
- Top Right | Patek Philippe - Complications Yellow Gold Chronograph Wristwatch - Sold for £31,000
- Middle Left | Donald McIntyre, Beach At Iona - Sold For £4,000
- Middle Right | A Pair of 19th Century Chinese Vases - Sold for £13,600
- Bottom | Herz Red - Blue And Cream Carpet Circa 1890 - Sold for £10,300

For a no-fee verbal valuation please contact our Sales Department on 01674 672775 or enquiries@taylor's-auctions.com www.taylor's-auctions.com



SCOTLAND STREET
EDINBURGH

Packed with period character and decorated in a rich colour palette, this substantial three-bedroom property forms part of an elegant Georgian terrace. Situated on a quiet, cobbled residential street on the eastern fringes of the historic New Town, the rarely available ground floor property offers well-proportioned accommodation with flexible living spaces. EPC C



Offers Over £875,000

max.mills@rettie.co.uk

Max Mills | 07887 994348



BANN

We are BANN, one of Edinburgh's leading construction companies. We specialise in creating exceptional spaces and buildings, whether that be a sympathetically restored period property or a cutting-edge new build.

We create exceptional spaces to live in.





Images are computer generated for illustrative purposes



1 2-3 1-2

Prices From £372,500

newhomes@rettie.co.uk

Claire Birrell | 0131 243 3858

WATER OF LEITH EDINBURGH

An eye-catching collection of 25 apartments nestled around the Water of Leith in an urban-meets-suburban location. Surrounded by lush established trees and offering easy access to the Water of Leith walkway, the location benefits from easy access into the city centre. Each apartment boasts outside space with a balcony or patio and is designed to help reduce the carbon footprint of residents by delivering significantly beyond the required minimum energy efficiency levels.



1 3 2

Offers Over £845,000

max.mills@rettie.co.uk

Max Mills | 07887 994 348

BELFORD PARK EDINBURGH

Handsome three bedroomed Victorian main door lower stone villa in excellent condition in fashionable and leafy West End of Edinburgh. Accessed by its own private entrance at the main door with classical pillars, the property has great proportions, a feast of period features as well as benefitting from a southerly aspect. The attractive mature garden surrounding it gives privacy and attractive outlooks from each room. EPC D





Images are computer generated for illustrative purposes



ABERCROMBY PLACE EDINBURGH NEW TOWN

Situated on one of Edinburgh's most sought-after streets, Abercromby Place is a stunning new development offering a rare chance to live in a magnificent Georgian building that's been meticulously converted. Embracing the very best from past and present, Abercromby Place presents sophisticated contemporary living behind a wonderfully preserved Georgian facade. Few New Town properties offer as many benefits as Abercromby Place.

1 2-3 2-3

Prices From £755,000

abercrombyplace@rettie.co.uk

Claire Birrell | 0131 603 8357



CHRISTOPHERHOWARD

Designers and Makers of
Luxury Bespoke Kitchens
and Interiors



We don't just stop at the kitchen.

Designed and beautifully made bespoke libraries, bookcases, media furniture and more.

Visit our website to see our full portfolio.



To see our unique designs

17 North West Circus Place, Edinburgh, EH3 6SX
T: 0131 226 2255

9 Rosebery Place, Gullane, EH31 2AN
T: 01620 842741

www.christopherhoward.com



1 3 3

Offers Over £850,000

maria.ponte@rettie.co.uk

Maria Ponte | 0131 624 9085



BARNTON AVENUE WEST
EDINBURGH

Immaculately presented three-bedroom, three bathroom single storey apartment forming part of a contemporary Applecross-designed luxury development, built c.2008 to exacting standards. The property is well positioned within the development, wrapped around an elegant gravelled courtyard and projecting onto a wide sun terrace and beautifully maintained private gardens manicured open green space of the Royal Burgess private members golf course. EPC C



Household Removals | Secure Storage
Packing Services | International Relocations | Industry Accredited

For more information on our services get in touch today.

Edinburgh
0131 669 0044
info.edinburgh@clockworkremovals.co.uk

Glasgow
0141 956 7111
info.glasgow@clockworkremovals.co.uk





Based in the heart of Glasgow's thriving West End we offer readily accessible and detailed knowledge in all property matters. Each transaction we deal with is handled from beginning to end by one of our highly experienced Partners.

Feel free to call us for an informal chat about your proposed move.

We are certain we will be able to help.

We can also assist with Wills, Powers of Attorney and Estate Administration.

Ferguson Whyte Solicitors
185 Byres Road, GLASGOW G12 8TS
T: 0141 339 8432 • F: 0141 339 4393
www.fergusonwhyte.co.uk



**FERGUSON
WHYTE**
SOLICITORS

"Nothing in the kitchen is as versatile as butter. From cakes to steaks, cooking would be soulless without it."

Daniel Clifford,
Midsummer House



JAMES MARTIN | BUTTER



Butter by James Martin (Quadrille, £22)
Photography: John Carey

JAMES MARTIN'S BUTTER

Butter is the essential book for anyone who loves to cook with this glorious, versatile ingredient.

Through over 130 original recipes, James Martin presents some of his favourite new dishes and classics – everything from savoury delights like Butter-poached lobster, Truffle butter brioche, Chicken with 'nduja butter and Dover sole meunière, to sweet treats including Rhubarb custard bread and butter pudding, Shortbread and Rum Baba.

Butter can bring so much to a plate of food and James showcases this comforting superstar of cooking to its very best.



SEA BASS EN CROUTE WITH HOLLANDAISE SAUCE

SERVES 6

600g puff pastry
plain flour, for dusting
1 sea bass (approx. 1.2–1.4kg), skinned,
boned and cut into 2 fillets

FOR THE MOUSSE

75g sea bass, skinned
75g scallops
125g egg (about 3 eggs)
1 egg yolk
200ml whipping cream
25g pistachios, chopped
a few sprigs of tarragon, chopped
sea salt and freshly ground black pepper

FOR THE HOLLANDAISE SAUCE

250ml white wine
100ml white wine vinegar
2 sprigs of thyme
2 sprigs of tarragon
black peppercorns
3 egg yolks
225g butter, melted
35g clotted cream

FOR THE EGG WASH

2 eggs
25ml full-fat milk

This is a true classic that I have been cooking for years and a fish like sea bass is great for this dish, but you can use any white fish, such as cod or haddock, or salmon. The most important thing with this recipe, apart from the quality of the fish, is the homemade puff pastry. There is a massive difference in colour and texture and above all else, taste. Served with hollandaise sauce, this is a classic that is worth the effort.

To make the mousse, blend the sea bass, scallops, whole eggs, egg yolk and cream in a Thermomix, in one movement, until homogenous and smooth. Fold through the pistachios and tarragon and season with salt and pepper.

Mix together the eggs and milk for the egg wash.

On a lightly floured surface, roll out the puff pastry to a thickness of 3mm, then divide it into 2 equal pieces. Transfer one piece to a baking sheet. Lay the first sea bass fillet onto the pastry and spoon the mousse evenly down its centre. Sandwich the other fillet on top. Carefully place the second sheet of pastry on top, trimming any edges to fit, and seal it in with egg wash. Cut out a pastry fish using the pastry offcuts to decorate the top of the sea bass parcel. Brush the top and sides with the egg wash and chill for 30 minutes, then add the pastry fish and any other details. Preheat the oven to 190°C (170°C fan)/375°F/gas 5.

Bake for 20 minutes until the pastry is golden brown and evenly baked.

While the fish bakes, make the hollandaise. Add the wine, wine vinegar, thyme, tarragon and 4 grinds of black peppercorns to a pan over a high heat and boil rapidly to reduce by half. Pass this through a sieve and store refrigerated in a clean jar, for use now and with leftovers another time. In a bowl set over a pan of simmering water, whisk the egg yolks with 3 tablespoons of the reduction and a good pinch of salt until you have a thick, glossy, light sauce. Then carefully, in stages, whisk in the melted butter, pouring it in a steady stream. Finish the hollandaise by mixing in the clotted cream and seasoning with some salt and pepper. Set over a pan of simmering water to keep it warm.

Serve a slice of the sea bass en croute with the hollandaise sauce on the side.



“Quite simply the most important ingredient in our kitchen. But James, everything in moderation!”

Galton Blackiston - Morston Hall



SQUID WITH BURNT BUTTER & FRIED CAPERS

SERVES 4

4 large squid, cleaned
2 tablespoons plain flour
50g butter
sea salt and freshly ground black pepper

FOR THE SAUCE

200g butter
2 tablespoons small capers
juice of 1 lemon
1 small bunch of flat-leaf parsley, chopped

Fresh squid seared in a very hot pan is such a simple dish, perfect for alfresco dining. The burnt butter with a touch of lemon and the fried capers are both key to this dish. Simply drain the capers and deep-fry them so that they pop open. Alternatively, just add to the foaming butter before serving.

Slice the squid into 10 x 3cm pieces and score. Place the flour and some seasoning in a shallow bowl, and coat the squid, dusting off any excess flour. In a large frying pan, heat the butter and, when foaming, add the squid. Cook for 2 minutes, then flip over and cook for a further 2 minutes.

To make the sauce, put the butter in a large pan and heat until it's nut brown. Add the capers, lemon juice and parsley.

To serve, divide the squid between 4 plates and spoon over the sauce.

CRISPY BUTTERMILK CHICKEN WITH CHIPOTLE DRESSING

SERVES 4–6

12 chicken thighs, skinned and boneless
500ml buttermilk
vegetable oil, for deep-frying
fine sea salt

FOR THE SEASONED FLOUR

300g self-raising flour
2 teaspoons celery salt
2 teaspoons dried oregano
2 teaspoons cayenne pepper
½ teaspoon ground nutmeg
3 teaspoons garlic salt
3 teaspoons onion salt
2 teaspoons dried thyme
1 teaspoon freshly ground black pepper

FOR THE CHIPOTLE DRESSING

1 tablespoon Dijon mustard
3 egg yolks
200ml vegetable oil
1 tablespoon chipotle chilli paste

TO SERVE

a few sprigs of coriander and mint, chopped
1 red and 1 green chilli, sliced
2 limes, cut into wedges

One of our most popular restaurant dishes for both kids and adults alike, the key is to use chicken thighs for the best taste, but soak them in buttermilk for at least 24 hours, as this flavours and tenderises the meat. The selection of spices is up to you, but this is our favourite combination. Simply mix with flour, coat the chicken and deep fry; if the chicken pieces start to colour too quickly, remove from the fryer and finish cooking in the oven, as you want the fryer at a temperature where it cooks the chicken through but browns the crumb at the same time. I love this with a chipotle dressing, tons of chilli and mint, and fresh lime.

Place the chicken in a large bowl or container and coat in the buttermilk. Cover and pop in the fridge overnight.

The next day, heat a pan of vegetable oil or a deep-fat fryer to 170°C (338°F).

Mix the flour together with all the spices in a shallow bowl. Drain the chicken from the buttermilk and dredge it through the seasoned flour, coating each piece well.

Fry the chicken in batches for 6–8 minutes until golden and crispy, then drain on kitchen paper.

To make the chipotle dressing, whisk together the mustard and egg yolks. Slowly drizzle in the oil, whisking continuously until you have a thick dressing, then whisk in the chipotle paste.

To serve, pile the chicken onto a platter, drizzle over the chipotle dressing and sprinkle the herbs and chillies over the top. Dot with lime wedges for squeezing.





FRANGIPANE & CHERRY BEAR CLAWS

MAKES 16

- 1 x quantity puff pastry
- 50g demerara sugar
- FOR THE FRANGIPANE**
- 80g butter, softened
- 80g caster sugar
- 2 eggs
- 25g plain flour, sifted, plus extra for dusting
- 80g ground almonds
- 75g frozen pitted cherries, defrosted and chopped
- FOR THE EGG WASH**
- 2 eggs
- 25ml full-fat milk
- TO SERVE**
- cherry compote (optional)

I've got to be honest with you, this recipe is my chef Adam's idea. I thought he was drinking when I heard the words 'bear claws' but it turns out he wasn't. I love the idea behind this recipe – frangipane at its heart and a great cherry compote to go with it, and my god it tastes nice!

Preheat the oven to 180°C (160°C fan)/350°F/gas 4.

On a lightly floured surface, roll out the puff pastry to a thickness of 3mm and cut out 16 rectangles measuring 8 x 16cm.

To make the frangipane, mix together the butter and sugar in a stand mixer until light and fluffy. Add the eggs one at a time until fully incorporated. Mix in the flour and ground almonds. Fold through the chopped cherries.

Whisk together the eggs and milk for the egg wash.

Pipe a generous 2 tablespoons of the cherry frangipane into the centre of each rectangle. Egg-wash below the frangipane. Fold over the top off each pastry piece and seal the pastries. Slash 3 bear claw marks exposing the frangipane and cut 4 lines to make the bear fingers. Transfer them to a baking tray (or trays) lined with greaseproof paper.

Brush the remaining egg wash over the pastries and sprinkle with the demerara sugar. Bake for 25 minutes until golden and crisp. Cool on a wire rack and, when ready to eat, serve with cherry compote if you like.

SHORTBREAD WITH STRAWBERRIES & CREAM

MAKES 20

There are so few ingredients in this recipe; it relies simply on good-quality butter, flour and sugar. If your mixture is a little bit too dry, add a little cold water, but not too much as the shortbread gets its name from the ratio of butter to flour to make it short – you are not making pastry!

Preheat the oven to 170°C (150°C fan)/325°F/gas 3.

In a large bowl, mix the butter, sugar and flour, rubbing them together with your fingertips until the mixture resembles fine breadcrumbs. Stir through the water to bring together into a dough.

On a lightly floured surface, roughly roll out the dough and then press into a 20 x 15cm baking tin. Sprinkle with caster sugar, prick with a fork and chill in the fridge for 20 minutes.

Bake for 10–15 minutes, then leave to cool in the tin on a wire rack. Cut into 20 rectangles and serve with strawberries and cream.

- 250g cold butter, cubed
- 110g caster sugar, plus extra for sprinkling
- 360g chilled plain flour, plus extra for dusting
- 1 tablespoon water
- TO SERVE**
- fresh strawberries and clotted cream



James Martin Manchester
 Located within the stunning Great Northern warehouse inside the Manchester235 Casino, James Martin Manchester serves stylish, modern British food, combining classic favourites with exciting new dishes.

James Martin at The Kitchen, Chewton Glen
 The Kitchen at the award-winning Chewton Glen delivers stylish, informal, family-friendly, dining in a beautiful, brand-new, purpose-designed space.



LEET HAUGH

COLDSTREAM, SCOTTISH BORDERS

Set within a Scottish Borders country estate on the north side of the River Tweed, Leet Haugh offers modern countryside living among the rolling pastures of the Scottish Borders. The estate sits on the edge of Coldstream – a friendly town with a small yet bustling High Street – and popular Leet Haugh combines the benefits of a small and neighbourly community with the market town amenities and good schooling of the local area.

1 2-3 2-3

Prices from **£146,500**

leethaugh@rettie.co.uk

Phil Dean | 01896 800 185



Riddle & Coghill

Statement kitchens, designed,
crafted and built to suit your lifestyle.



next125
authentic kitchen

LEITH

195 Lindsay Road, Leith
Edinburgh EH6 6ND

HAYMARKET

86 Dalry Road, Haymarket
Edinburgh EH11 2AX

Mon - Fri 9am to 5.30pm • Sat 10am to 4pm or by appointment

email: info@riddleandcoghill.co.uk **tel:** 0131 555 6555

Source: Next125

Riddle & Coghill
INTERIORS

www.riddleandcoghill.co.uk



Images are computer generated for illustrative purposes



1 4-5 3-5

Prices from **£595,000**

everlymeadow@rettie.co.uk

Isaiah Symonds | 01890 230 125

EVERLY MEADOW SWINTON, SCOTTISH BORDERS

Nestled in a desirable location in the Scottish Borders, Everly Meadow offers 26 luxurious and comfortable homes amid the South of Scotland's heather-topped hills and winding rivers. Sitting on the edge of the pretty village of Swinton, these energy efficient homes boast excellent home working opportunities with fibre broadband as standard. To encourage wildlife into the gardens, homeowners will be presented with nature-friendly products including bird boxes, bee habitats and meadow seed packages.



1 2 1

Offers Over **£450,000**

maria.ponte@rettie.co.uk

Maria Ponte | 0131 624 9085

COATES GARDENS EDINBURGH

Elegant and spacious two-bedroom drawing-room apartment occupying the first floor of a traditional Victorian building in the heart of the West End. The property is in immaculate condition with key original features such as ornate plasterwork, expansive sash and case windows with working shutters and a decorative fireplace of the era, in particular in the drawing room which offers light-filled living/dining room space. EPC C





**BELHAVEN TERRACE WEST, DOWANHILL
GLASGOW**

This incredibly spacious lower duplex conversion is formed over the lower two floors of a grand, blonde sandstone, Victorian terraced townhouse built between 1870 and 1874, designed by James Thomson. A series of open-plan areas has provided a bright and atmospheric home and zones have been created throughout the garden level for eating, living and working, which then link seamlessly to the south-facing outdoor space. EPC C



Offers Over £595,000

anne.sutherland@rettie.co.uk

Anne Sutherland | 07825 164 086



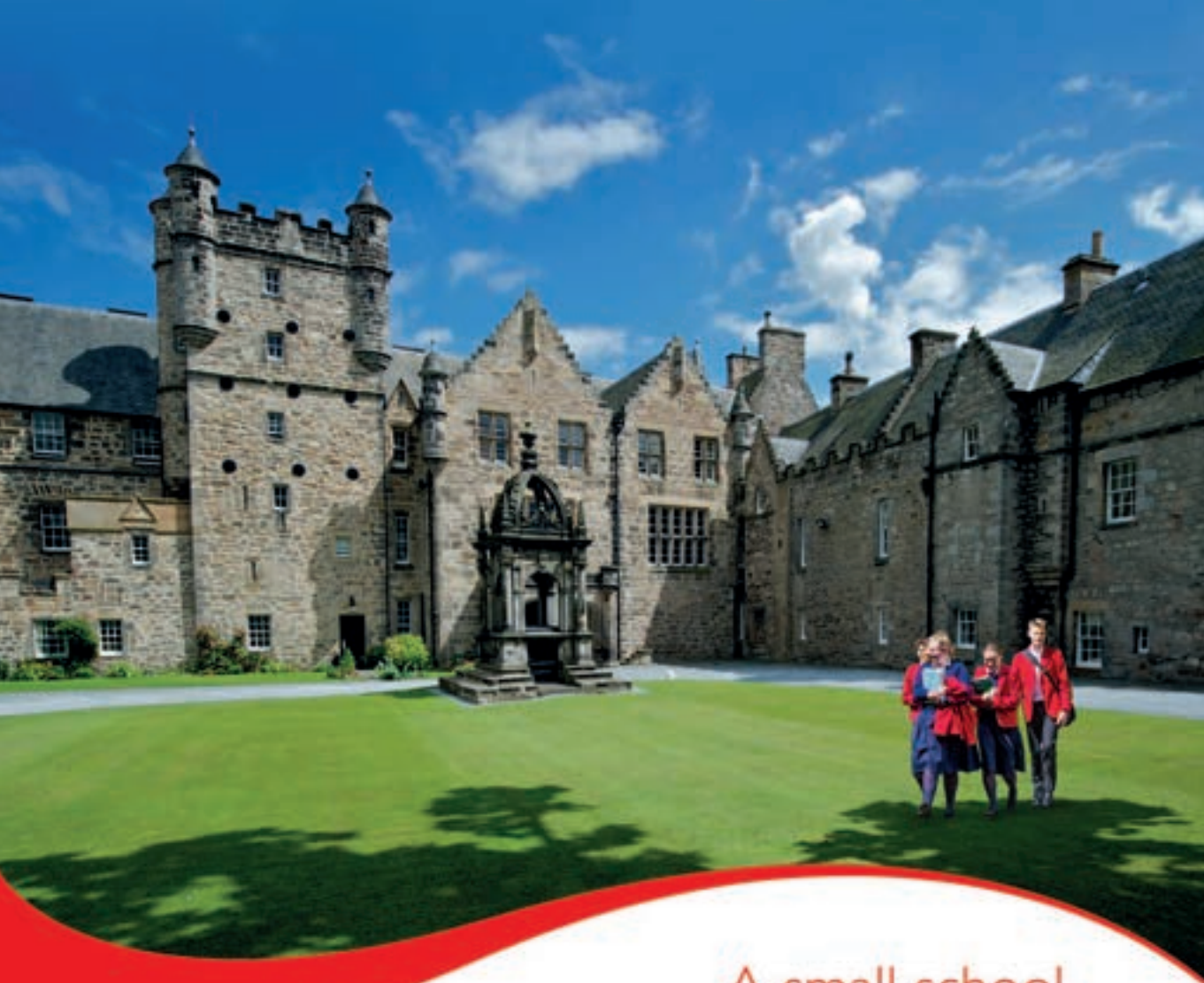
THE
**GLASGOW
SHUTTER
COMPANY**



**ALL
PREMIUM
GRADE
HARDWOOD**

PAINTED
OR NATURAL
FINISHES

Call or email for a free quote
0141 357 2104
sales@glasgowshutters.co.uk
www.glasgowshutters.co.uk



A small school,
big on heart, big on ambition



Loretto

Founded in 1827, Loretto is Scotland's oldest boarding school set in 85 leafy acres just outside Edinburgh

Day, flexi and full boarding for boys and girls aged 3-18 years

www.loretto.com
admissions@loretto.com
0131 653 4455



SERENELY
ELEGANT

Mikimoto and its pearls; A pioneering jewellery company.



The deep Japanese reverence for nature is encapsulated in the Mikimoto pearl; the perfect, pristine Akoya pearl, with its radiant lustre, otherworldly beauty, and shy, secretive allure. A miracle of the natural world, the pearl was perhaps the earliest, organic gem-material to be discovered by man, and the Mikimoto cultured pearl is the perfect expression of the creative synergy between man and nature. It was this synergy, this profound affinity to nature that propelled Mikimoto's revered founder, Kokichi Mikimoto, to invent the pearl culturing process in the late 19th century. Today, over a century later, the Mikimoto pearl remains the ultimate classic, serenely

elegant, with universal, cross generational appeal, and a certain inscrutable, mesmerising mystique – mystique rooted in the wondrous mysteries and miracles of nature, so profoundly and powerfully captured in Japanese art, and interpreted in the High Jewellery collections of Mikimoto.

In the microcosm that is the Mikimoto pearl, we see too a sublime expression of the company's essential fusion of East and West. The Ocean, the oyster, the pearl-diving were a constant presence in Kokichi Mikimoto's early, humble life in Toba, Shima province. The oyster was a marine product with the pearl almost exclusively used for medicine, particularly by the Chinese yet at the same time, on the

other side of the World, in Europe, Russia and America, pearls, of the species and quality found in the waters around Toba had become the most prized, precious and treasured possessions of women of style, status and substance. The ingenious invention of the Mikimoto cultured pearl in the 1890s marked a momentous milestone, both in the long story of jewellery and the history of Japan, democratising luxury, making dreams come true for women all around the world. The precious pearl, once the prerogative of royalty and nobility, was now accessible to women of all ages, class and culture, while remaining enmeshed in legend and romance, both a rite of passage and a symbol of femininity.

These lustrous links between East and West, man and nature, women and pearls, are embedded in the soul of Mikimoto, shaping the company's character, intent and integrity. All are expressed, subtly yet lyrically, in the High Jewellery collections of majestic, magical beauty, layered as they are with an homage to nature and with Japanese romantic yet reverential fantasies of stately, royal and noble European splendour.

This sense of reverence, honour and humility that are so much part of Japanese culture, permeate every aspect of Mikimoto's philosophy and practice, driving the company's single-minded dedication to perfection from the meticulous selection of only the very finest pearls for their strands and jewels, through the exquisite refinement of design, immaculate craftsmanship, and uncompromising attention to detail. I think particularly of the way in which rarefied craftsmanship is held in high esteem in Japan, the honour

bestowed on artisans know as 'national treasures' that elevates craft to the level of a true and noble art form. I think of Mikimoto's unrivalled expertise and devotion to the pearl, its meanings, origins, idiosyncrasies; the understanding of minute nuances of lustre, hue, and share that are explained with such passion and infinite patience, helping each client make the best choice, the perfect pearls to suit colouring and skin tone, and the right jewel, a choker or long strand, demure or daring, to suit individual personality and style. Mikimoto is dedicated to ensuring the perfect happiness of each and every client.

Nowhere is this dedication to perfection, to superlative craftsmanship, ravishing detail and customer happiness more evident than in Mikimoto's breath taking Ginza flagship store. The exterior, paved with 40,000 glass tiles, ripples with natural light, from sunrise to sunset, like sunlight glittering on the surface of the ocean. Inside, every floor, every department is decorated in a different style, naturalistic, atmospheric, with thrilling architectural details, including walls lined with traditional woven textiles, or with hand crafted tiled depictions of sakura, the sacred cherry blossom.

Words by Vivienne Becker

Laings Edinburgh

72 George Street, Edinburgh EH2 3BX

Laings Glasgow Flagship Showroom

46-50 Argyll Arcade, Glasgow G2 8BG

www.laingsuk.com





We're all set for the 150th Open, are you?

Visit us at rettieshortlets.co.uk to view the fabulous properties we have available.

We have extensive experience of managing short let properties for global events and we've sourced some of the best property listings in the heart of St Andrews and surrounding areas for this prestigious golfing tournament. Our lettings properties are vetted for quality and our experienced lettings management team are here to assist with your booking.

Demand is high for the 150th Open. Get in touch today to access maximum choice and to secure a booking.



RETTIE

rettieshortlets.co.uk
0131 221 1646



No one values your home move more...

Whether you're looking to sell or buy your home, we're here to help you make your move. With a team of dedicated Chartered Surveyors specialising in the inspection of residential properties, we're recognised nationally as a dominant force in home surveys and valuation. We are Scotland's largest Chartered Surveyors and providers of Home Reports. With 34 offices throughout Scotland no-one provides such extensive local knowledge with national coverage.

Unlock your next move with a Shepherd Home Report

Our team of experienced Chartered Surveyors are on hand to produce your Home Report. Our Chartered Surveyors are well established and trusted by all major lenders, committed fully to provide you with the highest quality Home Report.



Why Shepherd Chartered Surveyors?

- Nationwide network
- Decades of experience
- Local market knowledge
- Trusted professional advice
- Comprehensive offering
- Value for money service

For a professional Home Report contact us today and one of our experienced advisors will call you back. Visit www.shepherd.co.uk for your local branch or call 03330 164 000

CREATING A FLOW

As the most utilized room in the house, the kitchen should be pivotal in the design and flow with the other living areas. For a family in Edinburgh, they felt the existing kitchen in their detached property didn't reflect the quality of finish throughout the rest of house and the configuration didn't use the room to its fullest. With a stunning view onto their secluded garden they wanted a room that flowed easily from the house to the outdoors.

So they came to Senior Designer at Kitchens International Louisa Forsyth to get her to create a kitchen that reflected their love of cooking, gave them more workspace and multiple preparation areas. She said; "I wanted to create a kitchen that serves in a practical sense, with increased storage and a much larger island so that the worktop area is expanded, while also increasing the proportions of the kitchen so that it suits the scale of the room."

The rest of the house is minimalist, with floor-to-ceiling glazing throughout and a double-height space in the dining area, so the new kitchen couldn't feel poky. Louisa adds: "The clients had a lot of existing furniture and design prices that were to remain the focal point of the living space, so I felt the success of the kitchen would lie in the detailing of simple, clean lines which would allow the kitchen to sit back, rather than to stand out."

First off, it was agreed that the hob should be facing out into the room to create a very sociable working kitchen. A prep sink was added on the island too, allowing the main sink in the corner to be only used for dishes, which reduces the amount of time someone is working with their back to the main room.

The homeowners chose an elegant Leicht Contino80 handleless kitchen in Ceres Artic, topped with 20mm Eter Dekton worktops. This neutral colour scheme provides a calming effect and complements the existing dining and lounge areas. Louisa added a grey mirror panel from Intaglio glass above the sink area to create depth and light reflection. To enable that minimalist look the units on the island have push fronted drawers making for a sleeker look and feel.

The appliances are equally slick – most are by Gaggenau with a large induction hob, double ovens, warming drawer and dishwasher, complemented by built-in Sub Zero fridge freezer and Quooker boiling water tap, now seen as a necessity in most modern kitchens.

"One particular aspect of design that works well is the Siemens extractor which is incorporated in the large bulkhead over the island and drops down over the hob when required," says Louisa. This streamlined design feature means that it doesn't detract from the minimalist airy feel.



Lighting is all important to create the right ambience in the kitchen. LED ribbon lighting was installed below the plinth on the island which highlights it but also gives off a lovely soft light in the evening. Task lights under the wall units and over the sink area ensure there are no dark corners.

Cohesion in the living area keeps things organised. The L-shaped overhang of the island deftly mimics the corner of the floor-to-ceiling glazing, creating a seamless look. Similarly the blue bar stools with their wooden legs help to tie in neatly with the dining area. Louisa adds: "The kitchen reflects perfectly the overall aesthetics of the house, but also performs as a very functional and easy to use kitchen for a busy family lifestyle."

For this hectic family of 5 the finished result is perfect and they love the way it looks and performs. They said: "The whole process has been very professional and the team on the ground were also very diligent and attentive so despite the disruptive nature of such work, it has been a very positive experience overall."

Given the importance of the kitchen in the home, to enjoy the finished result everyday, all day is what Kitchens International aims for with every project. This open plan kitchen ticks all those boxes and has transformed the house, while still feeling that it has been there all along.

www.kitchensinternational.co.uk





Images are computer generated for illustrative purposes



1 2-5 3

Price on Application

redburnmeadows@rettie.co.uk

Phil Dean | 0131 243 3858

REDBURN MEADOWS
BLACKRIDGE, WEST LOTHIAN

Coming soon – an exciting new development of 184 luxurious family homes, comprising of detached, semi-detached and terraced houses ranging from two to five bedrooms, each with a private garden. Surrounded by lush greenspace, a meandering waterway and tree lined streets, this beautiful new neighbourhood will benefit from ample local amenities plus easy train and road access into Edinburgh and Glasgow, while retaining the privacy and tranquillity of a rural setting.



A unique family of independent schools for boys and girls

The Mary Erskine School
Stewart's Melville College
The Junior School

Feel
**OUR LOVE OF
LEARNING**

Independent education for girls and boys
from age 3 in Edinburgh's West End.

Find out more at esms.org.uk

Discover
what it feels like
to be looked after
by your bank.



At Hampden & Co, we provide private banking as it should be and each of our clients has a nominated banker who gets to know them and their banking requirements. If this sounds like the type of tailored service that you, your family and business would benefit from, please contact Banking Director, Clare Ansell.

Tel: 0131 297 0193 clare.ansell@hampdenandco.com

hampdenandco.com

Hampden & Co plc Registered office 9 Charlotte Square, Edinburgh, EH2 4DR. Registered in Scotland no SC366422. Authorised by the Prudential Regulation Authority and regulated by the Financial Conduct Authority and the Prudential Regulation Authority.



AN EDUCATION IN DIAMONDS

There is a certain twinkle in the eyes of Richard Laing as he describes the proposal stories he has been a part of over the years. Nestled in the luxurious Laings showroom he laughs conspiratorially as he recounts the romantic and occasionally humorous tales. Richard's role in all of them have been the same, he has found 'the one' – the diamond ring that marks forever.



Growing up in a luxury family jeweller meant that an appreciation for diamonds was unavoidable.

However, it was on Richard's trips to the diamond capital, Antwerp, where he really fell for the world's most famous gemstone.

Historically the largest diamond district in the world, the streets of the Belgian city have an enchanting atmosphere. Since as far back as the 15th century the city has been the focus of diamond trade and at one point 84% of the world's rough diamonds passed through. It is a place filled with promise, unimaginable riches and mystery, with the sought-after-stones reigning supreme.

With 380 workshops lining the Diamond Quarter, hours and days can be spent choosing from thousands of gemstones. There is an air of excitement to the district dubbed as the 'Diamond Square Mile'. Everyone here is in the business of romance, creating something to perfectly tell a love story that they are not even privy to yet.

"I loved the Antwerp trips. There's so much to learn from each company, all with different strengths. Some are good for fancy cuts, others are better for uncertified diamonds, or certified, you get to know them and build relationships depending on what you're looking for."

Honing his skills in Antwerp meant that Richard developed a keen eye for the very best diamonds available. In 2017 alone, roughly 234 million carats of diamonds were traded. This shows the substantial quantities that both the dealers and buyers work with, and Richard used his expertise to select only diamonds with the best fire and brilliance.

"I used to visit Antwerp with my dad and when I went to dealers on my own, they would often think this is going to be

easy, almost taking me for a bit of a ride. Instead, I examined every detail and selected the very best. It got to the point where they wouldn't let me see the rest of the diamonds as they knew I was only going to pick superior stones."

When Richard talks about diamonds it is easy to see that, for him, it is all in the details. With the knowledge he gained in Antwerp, he fully understands what makes them so renowned. As he examines the rings cushioned in Laings navy-blue boxes, he sees individual characteristics, invisible to most, that come together to create a unique personality for each stone that can then be admired by all.

"Buying diamonds from Antwerp is always an amazing experience. After going for so many years, I gained such an appreciation of what was involved. When buying loose diamonds direct from dealers, you have to make sure you are selecting the best ones."

Richard uses this expertise to add his own personal seal of approval to Laings exclusive jewellery range – The Family Collection. From the very beginning and continuing now, every diamond within the collection is blessed with the diamond custodian's seal of approval. He put in place the strictest criteria for the selected diamonds, with the 'cut' being of utmost importance.

"Whenever I visited Antwerp, I always knew that you could have the best colour, clarity and carat, however if the diamond is not cut down to perfection it will not outperform its counterparts. It was the always the detail that had me hooked and if you dig deep into the detail, then it's the quality of the cut that really brings the diamond to life."

As a master of diamonds, his years of experience allows the Family Collection to tell its own story, with gemstones



selected for their undeniable brilliance. With his extensive knowledge, Richard holds a unique position that has taken years of dedication to nurture. As custodian of Laings exclusive jewellery collection, his high-standards and technical know-how are critical to the Family Collection and its diamond selection.

"I love the responsibility of buying diamonds. I carry the Laing name and values, and know that I won't waver from quality – even an inch. That's why the Family Collection is so special, it's a culmination of the diamond knowledge I gained in Antwerp and the closest collection to my heart. Nothing compares to knowing that the diamonds will become part of someone else's special moments in life. It will become part of their own family story, as well as ours and that is truly special."

Unique to Laings, the Family Collection includes diamond pieces that have been inspired by personalities within the Laing family. With a selection of diamond engagement rings, matching wedding bands and jewellery suites, it is an exclusive collection of jewellery that is here for you at every stage of life. Fall in love with the collection and allow Laings diamond experts to guide you through the full range.

"I love the responsibility of buying diamonds. I carry the Laing name and values, and know that I won't waver from quality even an inch."

Richard Laing

Laings Edinburgh
72 George Street, Edinburgh EH2 3BX

Laings Glasgow Flagship Showroom
46-50 Argyll Arcade, Glasgow G2 8BG

www.laingsuk.com



DONALDSON CRESCENT
EDINBURGH

This rarely available, one bedroomed apartment forms part of The Crescent, a recent development by Cala set adjacent to the newly renovated Donaldson's School, an iconic Category A Victorian building designed by the famous architect, William Playfair between 1842 and 51. For a discerning person looking for a luxurious, secure and unique property in the city, this apartment ticks every box. EPC B



Offers Over £515,000

maria.ponte@rettie.co.uk

Maria Ponte | 0131 624 9085



RELAXED LIVING

TIME & TIDE

7-9 CHURCH HILL PLACE, EDINBURGH
53 COCKBURN STREET, EDINBURGH
398 BYRES ROAD, GLASGOW
6 ST GEORGE'S PLACE, GLASGOW
11 & 48 HIGH STREET, NORTH BERWICK
22 HIGH STREET, PEEBLES

TIME & TIDE

Stamp your Style



From a small shop in North Berwick which opened 12 years ago selling shells, model lighthouses and other coastal living accessories, Time & Tide has grown to a collection of seven individual stores across Central Scotland retailing desirable, contemporary furniture and interior accessories.

Whilst their Peebles store moved to larger premises just last month, the company trades a more established pair of stores in each of North Berwick, Edinburgh and Glasgow. With 398 Byres Road, Glasgow firmly recognised as a haven of elegant and sophisticated interior accessories and furnishings, their newer of the two, located at 6 St Georges Cross, takes precedence as the company's largest and only dedicated furniture store.

With a strong reputation for sideboards, side tables and consoles already established, St George's Cross displays 12 sofas and 8 dining tables dressed and merchandised to inspire within an impressive retail setting. The style is relaxed, luxurious hotel living, a look that has developed into their strongest collection to date.

Time & Tide's handwriting is front and centre here, within a store that at any one time displays an evolving range of upholstery, sideboards and dining furniture alongside bold chandelier lighting, patterned rugs and stunning wall art.

The vast majority of upholstery is manufactured to order in the UK. Sofas are available in a huge variety of fabrics and size options making this a bespoke service at great prices from one of the UK's best upholstery manufacturers. Other staples from the upholstery range - typically available for immediate delivery - include Harris Tweed Wing Chairs, Velvet Dining Chairs in bold colours and leather armchairs.

The cabinet furniture is predominantly wood but the difference and quality can be seen in the detailing. As well as oak, other favourites include reclaimed elm, mango and teak root. With metal inlay, marquetry square section and chrome or burnished handles, the furniture is sophisticated, glamorous and great value for money.

Whether looking to furnish luxe, hotel style apartments or detached, period properties with large rooms and high ceilings, Time & Tide has both relaxed, casual items and refined, contemporary pieces.



Sideboards are complemented by a range of dining tables of different finishes, sizes and shapes but all are guaranteed statement pieces that enhance any interior. And with access to a vast resource of further options, it's always worth asking if you don't see exactly what you are looking for on display.

Inside, the mood is relaxed, the vibe welcoming, with a dynamic and professional team to answer all customer needs. Time & Tide is a destination in interior retail, where customers can expect the latest developments in elegant, contemporary interior product.

Business founder, Ewan Douglas adds "While we have a great website, the stores are the heart of our business. This is where ranges, products and looks come together and we try and present the most dynamic and inspiring home interior displays we can. I've always thought that compared to other European countries, Scotland simply does not have enough inspiring interior stores. Recently, despite everything, we see more stores opening and this is great news. We really want to be part of an innovative interiors scene in Scotland and to help customers any way we can achieve a more inspiring and better looking home. We hope our largest furniture store, at St Georges Cross fulfils this brief for all our customers, new and existing." Located at the top end of Great Western Road with parking close by, stop by and view what really is one of the most inspiring and innovative interior stores in Scotland!





DENHOLM
PARTNERSHIP
ARCHITECTS



11 Dunira Street, Comrie, Perthshire PH6 2LJ www.denholmpartnership.co.uk 01764 670899



TIME FOR A
CHANGE

The Tank watch is Cartier elegance embodied, a pure and precise design, an uncompromising line. From its very creation in 1917, Louis Cartier made the distinct aesthetic choice of a rectangular shape, as opposed to the round watches of his generation...



“They have withstood the test of time thanks to their instantly recognisable style, but also their excellent craftsmanship.”

The Tank was already an avant-garde piece when launched and continues to be today. The two parallel brancards are its signature. Inspired by the design of a combat vehicle viewed from above, this watch follows one clear graphic principle: the brancards were the treads, the case was the turret. For the first time with the Tank, the case attachments were aligned with the strap to maintain the rhythm of the design. Wearing it becomes a statement. Vanguard Andy Warhol and his Tank were inseparable, he said about it: “I don’t wear a Tank watch to tell the time. Actually, I never even wind it. I wear a Tank because it is the watch to wear!” By refusing to wind his watch, the leader of pop art sanctifies the elegance of the Tank.

Tank Must

Timeless, sure of itself and of the purity of its design, the Tank watch captures the zeitgeist in 2021. After more than

a century, it has been reinvented with the Tank Must. Tank and Must, the fusion of two Maison icons: on one hand, Tank, essential and dandy, and on the other, Must, a name immortalised at Cartier in the 1970s that revisits the classic conventions of luxury. “The Must watches are part of the Maison’s heritage and legend. They have withstood the test of time thanks to their instantly recognisable style, but also their excellent craftsmanship, which Cartier applies to all its creations right down to the smallest detail.” Pierre Rainero, Director of Image, Style and Heritage at Cartier.

Tank Must is a chic watchmaking feat worn by many. A Maison signature whose design and movements are continuously evolving, driven by Cartier’s watchmaking commitment to constant progress. The Design Studio has reworked the design of these new Tank Must with monochrome versions and an original version based on a new photovoltaic movement.



Tank Must: Paying Homage to the 1980s Monochromes

With the launch of the Must watches in 1977, the Tank watch, a Maison watchmaking icon created sixty years earlier, was made available in a vermeil version. With a burgundy or all black dial and a large gold-coloured logo, it freed itself from traditional watchmaking codes, opting instead for elegant simplicity. Faithful to the spirit of the 80s, the new Tank Must watch is available in three monochromatic colours that are embedded into Cartier's DNA: red, blue and green. Steel watches that favour minimalist dials with no Roman numerals or "rail-tracks" and a fully chromatic look with matching straps.

Tank Louis Cartier

Created in 1917, the Tank watch very quickly spawned several variations. Louis Cartier reworked its design from as early as 1922. Its case was stretched, brancards refined and edges softened: the Tank L.C. had arrived. (Louis Cartier). A classic was born. "Rail tracks", cabochon sapphire, Roman numerals, Louis Cartier laid the foundations of a signature watchmaking aesthetic, with its very latest version perpetuating this tradition to within a few subtle nuances.

The Louis Carter Tank cultivates its timeless elegance in colour. The choice of blue and red was a must, as these colours are a part of Cartier's DNA. An intense red and a bright blue highlight and enhance the watch's pure lines. Cartier has added sophisticated details to these two precious versions, including Roman numerals and gold-coloured "rail tracks", which help to enhance the dial's graphic intensity. The blue version is in pink gold, the red in yellow gold, both coordinated with the straps, these two watches come with a Manufacture 1917 MC movement with manual winding.



Laings Edinburgh
72 George Street, Edinburgh EH2 3BX
www.laingsuk.com



1 3 2

Offers Over £495,000

phoebe.bolton@rettie.co.uk

Phoebe Bolton | 0131 624 4066

THE ARCH, THE SQUARE
MAINSHILL

The Arch is an attractive, immaculately presented country home created from a traditional farm steading, with an impressive stone façade, framing a large arched window below a grey slate roof. The garden, which is enclosed by hedging and a stone wall, has been thoughtfully created by the current owners to create a peaceful sheltered oasis from which to enjoy the views across East Lothian. EPC D



1 3 1

Asking Price £200,000

joanna.tinson@rettie.co.uk

Joanna Tinson | 0131 624 9040

THE MEWS AT DRUMCROY
ABERFELDY, PERTHSHIRE

Nine, three-bedroom mews houses, set within an enviably positioned development which is designed to deliver exceptional holiday accommodation within scenic Highland Perthshire. Each property will feature open plan living/dining/kitchen space with access to terrace and a family bathroom, located in the historic Aberfeldy.





WATCHMAKING ARTISTRY

Patek Philippe are masters of creating extraordinary complications in elegant and finessed style, perfect for the modern woman.

“Patek Philippe have created a collection of ladies complications timepieces that is truly unrivalled.”

*Craig Robertson, Patek Philippe
Brand Manager of Laings Glasgow*

Redefining the standards of fine watchmaking since 1839, Patek Philippe is renowned for its pioneering craftsmanship and inspiring design. With watches that go beyond telling time, the humble leader of horology is dedicated to constant innovation, creating timeless ladies and gents’ timepieces that you never truly own, but simply look after for the next generation. Trailblazers in the realm of ladies’ timepieces, Patek Philippe produced its first ladies’ complications wristwatch in 1916, with a five-minute repeater. Today, the series of ladies’ complications models has thrived, with Annual Calendars, World Time watches and Chronographs entering the assembly, graced with the traditional and exceptional craftsmanship details of guilloché and gem-setting – a signature of the Swiss manufacture.

Craig Robertson, Patek Philippe Brand Manager of Laings Glasgow, says:

“Patek Philippe have created a collection of ladies complications timepieces that is truly unrivalled. Each watch features not only some of the most impressive mechanisms in fine watchmaking, but are designed with finesse and elegant design.”

A ‘complication’ in watchmaking is anything a mechanical watch might do beyond telling the time and simple date. Patek Philippe upholds a tradition in complications that accompany their wearers in everyday situations, with exquisite timepieces that feature dual time zones, annual calendars and World Time displays. A lifetime of artistry and skill are embedded in each complications timepiece, creating objects of timeless worth. Patek Philippe Complications showcase the brand’s sophisticated functionality, with some of the most complicated watches that take up to two years to create.

Moon Phases

A complication that reminds us of the link between time measurement and the revolution of the great heavenly bodies, the moon-phase indication is a poetic complication, signature in the renowned collection of Patek Philippe’s complicated watches. The profound complication depicts the evolution of the moon, as seen from earth, shown usually in an aperture and sometimes displayed by hand.

In Ref. 7121J-001, the phases of the moon is housed in a case reminiscent of the iconic Calatrava, with a bezel decorated with 66 sparkling hand-set diamonds. Miriam Ainslie, Laings Southampton Watch Manager, shares her adoration of the Moon Phase complication:

“What a pleasure to glance at your wrist and envision the stars and moon as they appear in that moment, a mesmerising mechanism.”

The Gemsetting

Patek Philippe maintains a belief of rare and traditional techniques, with each precious gem placed by the hands of the experts. Where watchmaking becomes haute horology, setting of gemstones in a Patek Philippe timepiece is a delicate art, decorating each watch with the finest precious



stones, adorning the bracelet, dial, lugs, case and bezel.

Gracing each timepiece with the finest gemstones, each diamond placed in a Patek Philippe watch will uphold the highest quality, only allowing diamonds that are internally flawless, conform to the Top Wesselton colour specifications and display an immaculate cut.

By making a depression with a ball burr, the gem-setter prepares the bed for the stone. They then work the metal with their graver, raising it into beads or grains. These tiny amounts of metal will hold the stone firmly in place.

Annual Calendar

One of the most useful complications in the Patek Philippe series, the Annual Calendar has earned its rightful place as flagship models in Patek Philippe’s collection. The ingenious mechanism first arose in 1996 and indicates the day of the week, the date and month, requiring only one manual adjustment each year. This innovative and user-friendly complication accompanies women in the every-day, arranged elegantly in timepieces adorned with gemstones and hand-crafted with the finest materials by the artisans of Patek Philippe.

The warmth of rose gold and the vibrant, hand-stitched, shiny violine strap is strikingly placed against the silvery sunburst dial in Patek Philippe’s Ref. 4947R-001, housing the patented Annual Calendar in the most distinguished fashion.

World Time

In 1884, the International Meridian Conference in Washington, D.C. established the system of standard time and the division of the globe into 24 time zones. Patek Philippe channelled its expertise and ingenuity from this day



to create a timepiece that would display multiple time zones. across the globe, equipping voyagers with the ability to travel throughout the world, telling the time for every next destination. The chosen location is positioned at 12 o'clock, indicating the time and whether it is day or night. Local time is read from the hands in the traditional way, while the pusher at 10 o'clock allows you to transition between the time zones.

Ryan Williams, Laings Cardiff's Patek Philippe Brand Manager, regards the World Time models of Patek Philippe as his favourite of all:

"The World Time mechanism has to be one of Patek Philippe's most impressive complications, interconnecting cities across the world, it is truly the watch for adventurers."

Chronograph

120 years ago, Patek Philippe established its patent for the first double chronograph. Upholding a traditional of reinvention paired with age-old skill, Patek Philippe's chronographs have evolved and in the ladies' collection, display technical brilliance married with elegant design.

In Ref. 7150/250R, Patek Philippe has given a new look to its manually wound chronograph for women by engineering it with a timeless, understated rose-gold case adorned with vintage details, such as round guilloché pushers and a gently cambered sapphire-crystal "box" glass. The pulsometer scale respectfully pays tribute to the tradition of classic chronographs that can measure the rhythm of an active lifestyle or the slightly increased heart rate.

The Guilloché

The age-old technique of hand-guilloché is used to engrave

straight or circular grooves only a few tenths of a millimetre thick and three to four hundredths of a millimetre deep. This delicate art creates the beautifully engraved patterns seen on dials, movements, cases and bracelets across the collections of Patek Philippe. The art of guilloché thrived in watchmaking in the 19th century, but toward the end of the 20th century, it was at risk of becoming extinct along with the artisans who knew how to use the ancient machines. However, the demand for fine decorations and geometric patterns rose as the end of the millennium drew closer and so the remaining artisans were able to gift their knowledge to new craftspeople. Today, Patek Philippe keeps alive the once-fading art with artisans who carry a great love of the tradition.

7234R

The Calatrava Pilot Travel Time is the first self-winding Travel Time model in Patek Philippe's collection for women. The dual time-zone mechanism allows its wearer to, at a glance, read the time zone of loved ones afar, ensuring special connections are forever bonded and reminding its wearer of home.

The Reference 7234R combines a rose-gold case with a brown dial and is designed in unique aeronautical style. As a medium version of the Calatrava Pilot Travel Time launched in 2015, Patek Philippe channels its ingenuity to reinvent and reimagine its impressive timepieces.

Laings Glasgow Flagship Showroom
46-50 Argyll Arcade, Glasgow G2 8BG

www.laingsuk.com



Rettie - the name for premium short lets in Edinburgh.

As Edinburgh's premium property experts, Rettie & Co. need no introduction. Our sister company Rettie Short Lets is perhaps less well known, but specialises exclusively in managing short lets with a minimum booking of one month. Our guests often come from the corporate sector, but we also cater for those looking for high quality accommodation during the Edinburgh Festival and the Open at St Andrews.

If you are looking for a highly experienced and trusted partner to value your property during a year where demand is sure to be high, then please call **0131 221 1646** for a no obligation and confidential appraisal.



info@rettieshortlets.co.uk

rettieshortlets.co.uk



1 3 1

Offers Over £485,000

maria.ponte@rettie.co.uk

Maria Ponte | 0131 624 9085

GEORGE IV BRIDGE EDINBURGH

Spectacular top floor three-bedroom apartment within an original late Victorian building in an elevated position adjacent to the heart of the historical Old Town, featuring panoramic views of the city skyline including an uninterrupted vista of Edinburgh Castle to the rear, whilst to the front, views of the university buildings and George IV Bridge capture the history of the area. EPC D



3 4 2

Offers Over £615,000

phoebe.bolton@rettie.co.uk

Phoebe Bolton | 0131 624 4066

GREENFOOT, THE SQUARE GIFFORD

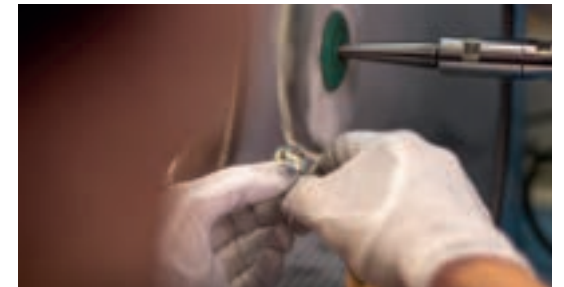
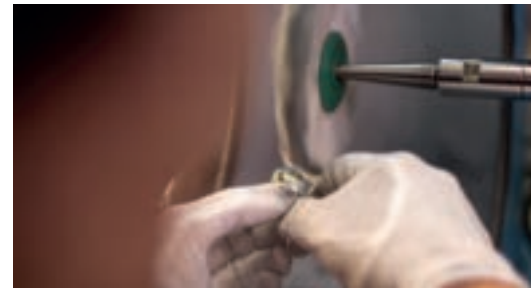
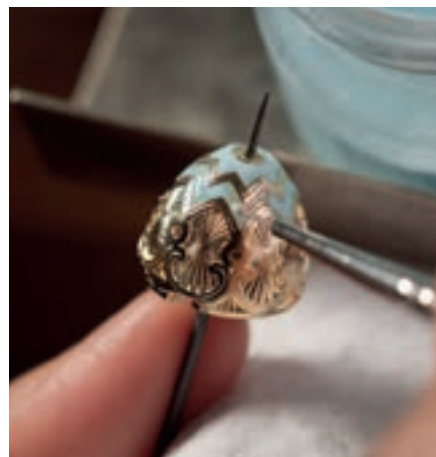
An attractive picket fence, white render façade with blue painted window surrounds, and grey slate roof all characterise the picturesque Southeast facing facade of Greenfoot Cottage. Formerly the Headmaster's house, the cottage occupies a prominent position beside the village hall, overlooking the square with the original water pump and market cross, and beyond to the village green. EPC F





THE JOURNEY OF A FABERGÉ EGG

For nearly two centuries, mystery and intrigue has surrounded the legendary Fabergé.



For the very first time, Fabergé invites you inside one of its workshops nestled in the Black Forest in the jewellery capital of Germany, Pforzheim. The workshops are overseen by Fabergé's appointed workmaster Dr Marcus Mohr - fourth generation of Victor Mayer, a 130-year-old family business well versed in the art of guilloché and enamelling. Mohr focuses on supplying Fabergé pieces for the Heritage collection, which predominantly uses the traditional techniques of guilloché and enamelling. With his team, he explores new and innovative ways to bring historical craftsmanship into the 21st century - though the core processes within both art forms have remained largely unchanged. The combination of bright enamels in playful shades, set with coloured gemstones, are a feast for the eyes and inspire Fabergé's motto: 'A Life in Colour'.

Historically, Peter Carl Fabergé had a talent for finding skilled craftspeople and today the business functions in the same way, working with the most talented craftspeople in their respective field of work.

Peter Carl Fabergé was considered a genius of the ancient technique of guilloché enamelling, inventing over 145 new colours and establishing himself as a true pioneer in the field. Today, Fabergé proudly continues this legacy. Enamelling is a seemingly magical process by which powdered coloured glass is bonded to a surface via heat of 900 degrees centigrade - it's a delicate science, a few seconds too long in the kiln and the piece will need to be restarted from scratch. This highly complex and delicate

technique requires great skill and many years of experience.

Gold is hand poured into bespoke silicone moulds, before being delicately filed and buffed. Next, the mesmerising guilloché pattern unfurls by engine turning, a technique which dates back to the 18th century and has remained an integral part of Fabergé's creations since the company began.

Fabergé's craftspeople meticulously hand-paint the unique coloured powder onto the egg, and when heated, the powder melts, flows and hardens into a lustrous, shiny surface. It can take up to five layers and five firings in the kiln to create the desired effect and can take as long as two days to produce a single item. Perfection takes time.

16 sparkling diamonds are then delicately set into the outside of 18k gold egg before it is assembled, including the fitting of a signature 'surprise' inside, and polished. The final stop is quality control - after being inspected under the microscope to ensure there are no imperfections, it is carefully packaged and shipped to Fabergé's London headquarters for the final check before it makes its way to the client. Each pendant beautifully captures the spirit of Peter Carl Fabergé and creates a legacy for future generations.

Creations from Fabergé's Heritage collection are available at Faberge.com and selected global retailers.

Laings Edinburgh
72 George Street, Edinburgh EH2 3BX
www.laingsuk.com

SHORTLET PROPERTIES



NORTH STREET ST ANDREWS

A wonderful opportunity to stay in the birthplace of Jock Hutchison, Open Champion 1921 and the first American to win the competition, this fantastic four bedroom property centrally located in St Andrews, a short walk from The Old Course. This charming accommodation is laid out over three levels and benefits from a lovely private enclosed rear garden.



£24,000 for the duration of The Open

vanessa.rettie@rettieshortlets.co.uk

Vanessa Rettie | 0131 221 1646



RUTLAND SQUARE EDINBURGH

This beautiful penthouse apartment is immaculately presented, on the third floor of the building. The two bedrooms are large and light filled from the new conservation rooflights - and both have large amounts of storage space. A glass door from the hallway leads out onto a private terrace. Contemporary slot windows send light from the terrace into all parts of the apartment creating a very light and open space.



£4,500 for the month of August

vanessa.rettie@rettieshortlets.co.uk

Vanessa Rettie | 0131 221 1646

THE GRANARY MOUNT MELVILLE, ST ANDREWS

A luxury bright and airy three-bedroom, three bathroom family home in a quiet residential hamlet. Based on the outskirts of St Andrews, just over 2 miles from the Old Course, this property is the perfect location to stay for the Open 2022. Accommodation comprises a large luxury kitchen and a stunning large living room with period beam features, a log burning fire and a 65 inch Samsung QLED HDR TV with Sky Sports & BT Sport.



£19,500 for the duration of The Open

vanessa.rettie@rettieshortlets.co.uk

Vanessa Rettie | 0131 221 1646



COMLEY BANK ROW EDINBURGH

A fantastic one bedroom ground floor apartment located in the ever popular area of Stockbridge. Accommodation comprises of an open plan sitting room and fully fitted modern kitchen with a breakfast bar, a comfortable and bright double bedroom with built in storage. Comely Bank Row is a short walk from the City Centre and Stockbridge with lots of independent shops, restaurants and bars to enjoy on your doorstep.



£2,500 for the month of August

vanessa.rettie@rettieshortlets.co.uk

Vanessa Rettie | 0131 221 1646



OFFICE DIRECTORY



BEARSDEN

165 Milngavie Road
Glasgow
G61 3DY
0141 943 3150

BERWICK UPON TWEED

50 Hide Hill
Berwick-Upon-Tweed
TD15 1AB
01289 305158

BORDERS

1 Abbey Street
Melrose
TD6 9PX
01896 824070

EDINBURGH

11 Wemyss Place
Edinburgh
EH3 6DH
0131 220 4160

EDINBURGH FINANCIAL SERVICES

11 Wemyss Place
Edinburgh, ED3 6DH
03301 759 977

EDINBURGH LETTINGS

4 Jamaica Street
Edinburgh
EH3 6HH
0131 622 4160

GLASGOW CITY

147 Bath Street
Glasgow
G2 4SQ
0141 471 6700

GLASGOW FINANCIAL SERVICES

147 Bath Street
Glasgow, G2 4SQ
03301 759 977

GLASGOW LETTINGS

147 Bath Street
Glasgow
G2 4SQ
0141 248 4160

GLASGOW WEST END

115 Byres Road,
Glasgow
G11 5HW
0141 341 6000

LONDON

40 St James's Place
London
SW1A 1NS

NEW HOMES

11 Wemyss Place
Edinburgh
EH3 6DH
0131 243 3858

NEWCASTLE UPON TYNE

101 St Georges Terrace
Newcastle-upon-Tyne
NE2 2DN
0191 338 9999

NEWTON MEARNS

116 Ayr Road
Glasgow
G77 6EG
0141 639 1999

SHAWLANDS

196 Kilmarnock Road,
Shawlands, Glasgow
G41 3PG
0141 406 4999

ST ANDREWS

28 Bell Street
St Andrews
KY16 9UX
01334 237 700

TOWN AND COUNTRY HOMES

11 Wemyss Place
Edinburgh, EH3 6DH
0131 220 4160



scottishstovecentre



Over 75 years of
unrivalled expertise



Call us on 0141 644 0000
or visit our showroom

63 Main Street, Craitlamie, by Drymen, Glasgow, G63 0EU
Tel: 0141 644 0000 Email: info@scottishstovecentre.co.uk

www.scottishstovecentre.co.uk



- Design & Planning
- Installation Service
- Chimney Re-lining
- Chimney Cleaning



MULTREES WALK

EDINBURGH

EDINBURGH'S MOST STYLISH
SHOPPING DESTINATION

THE VERY ESSENCE OF LUXURY SHOPPING AND HOME
TO EXCLUSIVE FASHION AND LIFESTYLE BRANDS.
HARVEY NICHOLS, MAX MARA, CANADA GOOSE,
MULBERRY, LOUIS VUITTON, BURBERRY, STRATHBERRY,
JOHNSTONS OF ELGIN AND MORE.